

ENGAGE. EMPOWER. EXCEL.

# Upgrade to TAE40122 Certificate IV in Training & Assessment



YOUR PATH TO A BETTER JOB AND A BETTER LIFE!



**FORTRESS**  
LEARNING

July 2024

# Who Is Fortress?

We help people from all walks of life (in any industry) level up and become fully qualified trainers and assessors in the most efficient timeframe possible.

We are a group of people who are passionate, who love what we do and how we get to change the lives of others, helping them transform their own careers by gaining a quality qualification that opens doors to new opportunities and a new life!

For over 14 years, we've been training, supporting and mentoring the next generation trainers and assessors.

We know the industry inside out, and we have a reputation for producing high-quality trainers.



Providing The Latest And  
Greatest TAE Skills And  
Education!



## Fortress Philosophy

- We're better together, every day
- The buck stops with me!
- People to people, heart to heart
- Shaping greatness today, tomorrow and beyond
- We do what we say we do!
- And we are generous when it matters most...

## OUR PURPOSE

*We create inspirational educators  
and find innovative ways to bring  
learning to life.*





# Before You Go Any Further...

## It's Not Actually An "Upgrade"

While we've used the word "upgrade", it's not technically an upgrade. The TAE40122 is a successor to the TAE40116, so the qualifications are equivalent. It's the units of competency within the qualifications that have changed.

We've used the word "upgrade" above only because it's what many people are using to describe the "transition" to the new Cert IV TAE40122 qualification, and we get it, but we didn't want to create confusion. So from here, we'll refer to it as a transition.

But before you decide to transition from your TAE40116 qualification to the shiny new TAE40122, we want to confirm you are in the right place so we have a few questions...

## To Transition To The New Shiny TAE40122, Can You Say "YES" To All Of The Following?

1. Do you hold the full TAE40116 Certificate IV in Training and Assessment, and can you provide both your Certificate and the transcript of the units you hold?
2. Are you currently working as a trainer and assessor, or have you been in the last 2 years?
3. Are you going to be able to provide authentic evidence of the following:
  - Assessment Tools that you have developed?
  - Trainer and Assessor Profiles?
  - Professional Development Plans?
  - Session plans and attendance sheets for the face-to-face delivery of training?
  - Evidence of assessing learners against units of competency?
4. Do you understand that the speed of completing this transition will depend on your access to, and ability to submit the evidence required?

You could finish the transition in a week if you have access to everything and can commit the time, or take up to the 3-month mark. It's largely up to you.

We really want you to succeed and that this transition course is the best possible fit for you, so if you have answered no to the above questions, we encourage you to speak with our course advisors to explore alternative options.



# The Fortress Difference



## Efficient RPL Process

Thanks to our in-house RPL experts, we have removed the pain from the TAE40116 to the TAE40122 transition, making it as straightforward and efficient as possible for you to complete fast.



## Faster Marking Times

With a maximum turnaround time of 1–4 days (3 - 8 days maximum for the "Solo" support package only), completing the whole qualification is mostly up to you. Bonus!



## Premium Support

With your trainer, you'll go through the RPL kits to tick off many of the units of competency required to transition to the TAE40122, and for the units or assessments you still need to do, support is just a or email call away.

## Why Upgrade Now And How It Can Help You...

There is new content in the TAE40122 that wasn't included in the TAE40116, so upgrading means you'll have all the latest industry knowledge, skills, and practices to rock at training and assessing learners.

And here's the cool part: having the newest TAE credentials shows that you're engaging in professional development and are motivated to be exceptional. THIS makes you stand out, so what do you think it could do for your employment opportunities? It's worth going for the TAE40122 qualification!

## What Others Are Saying...

**RP** Rachel Pace  
1 review AU

★★★★★ Verified

Apr 30, 2023

### If you want to complete your TAE studies do it with the best, do it with Fortress Learning!

I highly recommend Fortress Learning as the RTO to complete your Cert IV TAE via distance education through. I was previously with another RTO who went under nearly halfway through my course. Fortress marked the assessments I had completed and were able to grant me RPL. My trainer, Deb, was amazing. The support I received throughout the course was amazing. Assessments were marked within a week and feedback was always constructive. If you want to complete your TAE studies do it with the best, do it with Fortress Learning!

**JW** John Whalan  
1 review AU

★★★★★ Verified

May 5, 2023

### I am pleased I chose Fortress Learning...

I am pleased I chose Fortress Learning for my TAE upgrade training. From start to finish, everyone was so helpful with every aspect and my trainer Deb provided excellent guidance and feedback throughout. The videos by Emma were very clear and easy to follow to help with each step of the assignments. Can't recommend Fortress highly enough for those requiring professional training in the Courses' they offer.



## RESULTS

# Our Stars Speak for Themselves



Our students have spoken.  
With over 1540 verified reviews and a 4.8 star average, we have the most reviews and highest rating of any TAE Training Provider.



And with a 4.9 star average in Google Reviews, we are also a stand out from other training providers. Feel free to read them and compare us with other TAE providers.



## HOW IT WORKS

We'll conduct a gap assessment by analysing your TAE40116 transcript before or after enrolment.

We will then credit transfer 2 of the units from your TAE40116 (TAED402/ and either BSBCMM411/TAED301) as these are equivalent units to their successors.

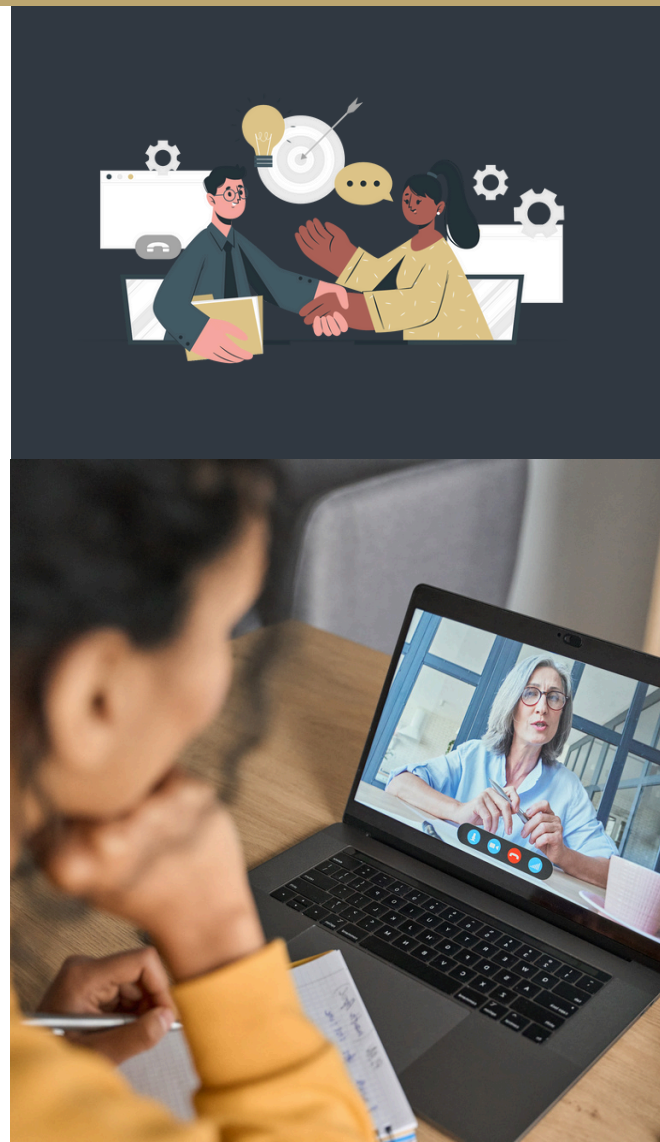
We will then package the remainder of your units, and you will be able to complete the course by accessing and completing a range of knowledge question assessments, assignments, and/or RPL assessment kits.

See "What units will end up in my transcript" below for how each unit is assessed and completed.

### Course Requirements

You must hold the TAE40116 and be able to produce your qualification and transcript documents.

You must be currently working as a trainer and assessor or have done within the last 2 years.



# THE TRANSITION FROM THE TAE40116 TO THE TAE40122



## How Each Unit Is Handled And What Ends Up In Your Transcript:

### CORE UNITS:

- TAEASS412 Assess competence (completed via Gap Knowledge + Skills Assessment – Integrated RPL Kit)
- TAEASS413 Participate in assessment validation (completed via Assignment/Workshop or RPL Kit)
- TAEDEL411 Facilitate vocational training (completed via Gap Knowledge + Skills Assessment – Integrated RPL Kit)
- TAEDES411 Use nationally recognised training products to meet vocational training needs (completed via Gap Knowledge Assessment)
- TAEDES412 Design and develop plans for vocational training (completed via Gap Knowledge + Skills Assessment – Integrated RPL Kit)
- TAEPPD401 Work effectively in the VET sector (completed via Assignment or RPL with BSBAUD412)

### ELECTIVE UNITS:

- Group A: TAEDEL412 Facilitate workplace-based learning (credit transfer)
- Group A: TAEASS512 Design and develop assessment tools (completed via Gap Knowledge + Skills Assessment – Integrated RPL Kit)
- Group A: TAEDEL311 Provide work skill instruction (completed via credit transfer or RPL with TAEDEL411)
- Group B: TAEELN421 Integrate core skills support into training and assessment (completed via Gap Knowledge + Skills Assessment – Integrated RPL Kit)
- Group C: BSBAUD412 Work within compliance frameworks (completed via Assignment or RPL with TAEPPD401)
- Final elective unit may be imported from any Cert III or above Qual such as TAE40110/TAE40116, TAE SKILL SETS, and industry relevant AQF qualifications



# 4.8+ Stars On Every Platform



**Wes Harder**  
1 review AU



Feb 7, 2023

### I highly recommend Fortress Learning

I highly recommend Fortress Learning if you are thinking of starting a course or gaining a new qualification. The staff and trainers are thorough, professional, and their attention to detail is excellent. The online portal system is simple to navigate, and the course notes and videos are clear, concise and easy to follow.

I found the trainers and assessors to be readily available, prompt in their replies, and in some instances willing to go above and beyond, especially in my case where a deadline was imminent.

I wouldn't hesitate to recommend Fortress Learning.

Date of experience: February 06, 2023

**Stuart Spurduti**  
1 review AU



Feb 12, 2024

### Great experience

I would not hesitate to study with Fortress again, the support is second to none and they are constantly there to support you, Thank you again for all you have done

Date of experience: February 12, 2024

**Rosie Byrne**  
1 review AU



Feb 17, 2024

### Great experience with Fortress Learning...

My experience with Fortress Learning has been very positive. The content was easy to follow, the assignments all came with videos to assist in understanding how to complete assignments and the team at Fortress Learning were very helpful, quick to respond to emails and understanding.

Date of experience: February 09, 2024

**Geetika**  
1 review AU



A day ago

### Kudos Fortress !!

I had great experience with fortress. The team was always there to assist and help. My trainer Deb, guided me so patiently through the units. There are videos at every step, which are extremely detailed, and helps through the assignments.

I would highly recommend this RTO for any course that anyone is looking at doing.

Date of experience: March 08, 2024

## This Transition course is just \$1650 with fortnightly and weekly repayment options, or if you pay-in-full it's just \$1500. You're so close to:



- More career choices
- Increased job security
- Stronger training and assessment skills
- The most up-to-date TAE knowledge
- And more personal satisfaction

**WE WILL SUPPORT YOU EVERY STEP OF THE WAY, GUIDING YOU TOWARDS PERSONAL GROWTH AND MASTERY SO THAT YOU CAN TEACH OTHERS IN YOUR INDUSTRY WITH COMPLETE WISDOM AND CONFIDENCE**

# FREQUENTLY ASKED QUESTIONS

## Who Is This For?

This program is designed for any person who wants to advance their skills as a trainer and assessor and gain the latest qualification. Who currently works in an RTO as a trainer and assessor, or who has experience working as a trainer and assessor in the VET (Vocational Education and Training) industry in the last 2 years.



## How Long Does It Take?

It could be done within a week if you take the time and have all of your evidence readily available. The average person is working full-time and juggling families and other things, so we've given you a 3-month enrolment period which is more than enough time to complete the full transition if you commit to consistent study time.

## Are There Flexible Payment Options?

Payment plan options are available for weekly and fortnightly direct debits from credit cards or bank accounts (on request). Details of those options are outlined above, they're also on the relevant course page once you click "enrol", or your Course Advisor can help you work out what's best for you.



## How Long Do You Take To Answer My Calls or Emails?

All emails are responded to within 8 business hours by our support team.

If we miss your call, just leave a message and we'll call you back within 4 business hours.

## How Much Trainer Support Do I get?

You have 2 hours of included trainer support; 4 x 30 min sessions should be more than enough. It's a pretty straightforward process if your experience is current and you have your transcript for your TAE40116. If you use all that up, you can pay as you go for more one-on-one trainer time @ \$50 for a 30-minute session.



## What If I Change My Mind?

All students have a 30-day cooling-off period. If you have any issues (at any time) that's making your learning journey difficult, our support team is there to help you resolve them. All you need to do is reach out, which we encourage you to do. There isn't much they can't fix or sort out to keep you moving forward.

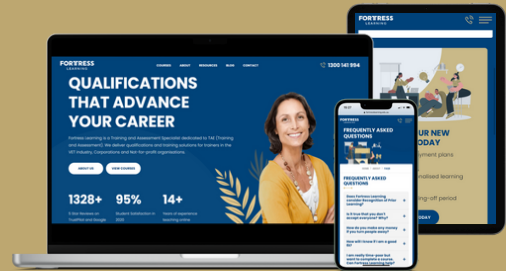
*"There are no shortcuts to any place worth going." - Beverly Sills*



# Here's What You Get Full Access To:

## 1. Our Online Training Portal

This is where you'll access your RPL Kits, all gap course work and assessments, and be able to submit all of your assessments and evidence for review to complete your transition to the TAE40122 in the most simple and efficient way possible.



## 2. The Support You Need

With the upgrade package, you receive 2 hours of one-on-one time with a trainer to use as you need it, IF you need it. The process is pretty straightforward if you currently work as a Trainer and Assessor and have your TAE40116 transcript.



## 3. Highly Experienced Trainers

Our trainers are highly qualified, located here in Australia and have come from various industries. They can speak in your industry language, helping you to truly understand the material and how it relates to your job.



## 4. Expertly Designed RPL Kits

Our integrated RPL kit has been designed to make it really simple for you to be able to provide evidence of your experience in the TAE22 units that are not equivalent to their predecessors. You will complete one RPL Kit to address all of these gaps, making the process streamlined and manageable.



LET'S DISCUSS YOUR TRAINING & CAREER NEEDS

## Need More Help?

If you're not sure what's right for you and you want to talk to someone awesome, or if you just want help enrolling, call or email us. Our Course Advisors are always willing to help.

# FORTRESS LEARNING

[WWW.FORTRESSLEARNING.EDU.AU](http://WWW.FORTRESSLEARNING.EDU.AU)

Get in touch

[enquiries@fortresslearning.edu.au](mailto:enquiries@fortresslearning.edu.au)

**1300 141 994**



NATIONALLY RECOGNISED  
TRAINING

RTO 31974